

Standard Preparation 1400 mm Sink with 2 Bowls

ITEM # _____

MODEL # _____

NAME # _____

SIS # _____

AIA # _____

**132809 (LG1426PN)**Sink unit with 2 bowls
600x500mm, 1400mm

Short Form Specification

Item No. _____

Made from 304 AISI stainless steel. The 50mm high worktop in 304 AISI stainless steel, 1mm in thickness, is sound-deadened and has an overflow rim and welded corners. Integral rear upstand, h=100mm, with 8mm radius. All-round apron. Square section legs 40x40mm on 1" height-adjustable feet (+/-20mm)

N. 2 bowls mm600x500x300h with overflow pipe and 2" drain hole.

Construction

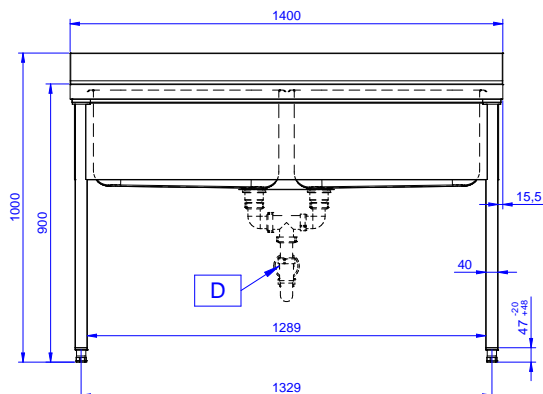
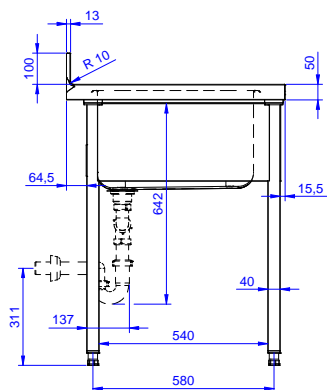
- 50 mm worktop in 304 AISI stainless steel, 10/10 in thickness with overflow rim along the top.
- Square section legs and 40 mm height-adjustable feet in 304 AISI stainless steel.
- Sink tops easily slotted onto the legs and taps are easily installed from the rear.
- Delivered in knock-down package.
- Wide range of taps are available to suit every need.
- 100 mm upstand with 10 mm radiused corner and 13 mm deep, designed to be used against a wall.

Optional Accessories

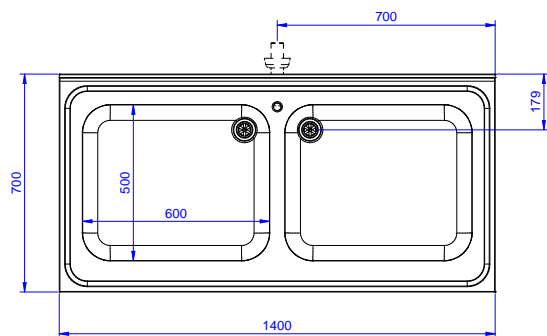
- Lower shelf for 1400mm tables and sinks PNC 855146 ☐
- Set of 4 wheels (2 with brake) d. 100mm for tables and sinks (total height on wheels= 993 mm) PNC 855150 ☐
- 3-sided underframe for 1400mm tables PNC 855153 ☐
- Elbow operated mixer tap with spout, 3/4" single hole PNC 855322 ☐
- Elbow operated mixer tap short spout, 3/4" single hole PNC 855323 ☐
- Foot operated Mixer tap with spout & with hot&cold pedals, 3/4" PNC 855328 ☐
- Elbow operated mixer tap with spout, 3/4" single hole PNC 855374 ☐
- Elbow operated mixer tap with short spout, 3/4" single hole PNC 855375 ☐
- Single hole deck mounted mixing temperature monoblock faucet PNC 855382 ☐
- Single hole deck mounted extra robust pot filling mixing temperature faucet PNC 855383 ☐
- Single hole deck mounted mixing temperature faucet with short spout PNC 855384 ☐
- Single hole deck mounted mixing temperature pre-rinse unit PNC 855385 ☐
- Single hole deck mounted elbow operated mixing temperature faucet with pre-rinse unit PNC 855386 ☐
- Single hole deck mounted riser add-on mixing temperature faucet with pre-rinse unit PNC 855387 ☐
- Single hole deck mounted elbow operated mixing temperature faucet with short pre-rinse unit PNC 855388 ☐

APPROVAL: _____

- Single hole deck mounted riser add-on mixing temperature faucet with pre-rinse unit PNC 855389 ☐
- Single hole deck mounted mixing temperature faucet with pre-rinse unit PNC 855390 ☐
- Floor fastening kit for 2 square legs PNC 865386 ☐
- Single plastic drain syphon 2" for sinks PNC 895313 ☐

Front

Side


D = Drain

Top


Key Information:

External dimensions, Width:

132809 (LG1426PN) 1400 mm

External dimensions, Depth:

700 mm

External dimensions, Height:

1000 mm

Upstand Dimensions, Height:

100 mm

Upstand Dimensions, Depth:

13 mm

Upstand Dimensions, Radius:

R=10

Bowls number

2

Bowl dimensions

600x500xH320

Worktop thickness:

50 mm

Net weight:

46 kg